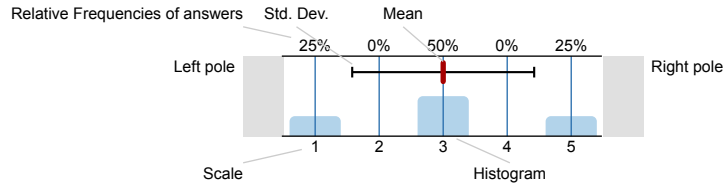




## Survey Results

### Legend

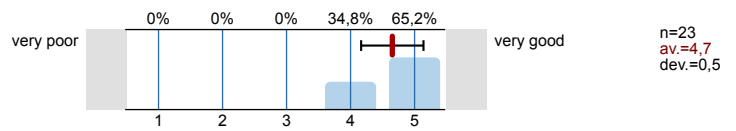
Question text



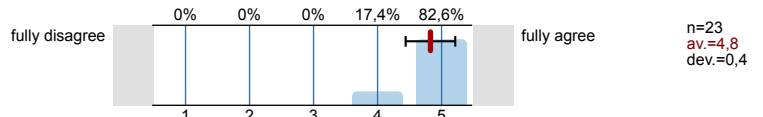
n=No. of responses  
av.=Mean  
dev.=Std. Dev.  
ab.=Abstention

### General

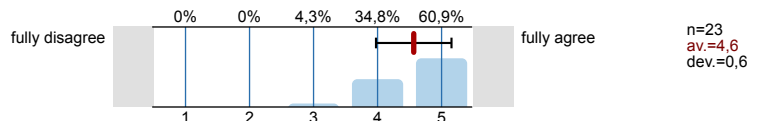
My overall evaluation of the content of this course is



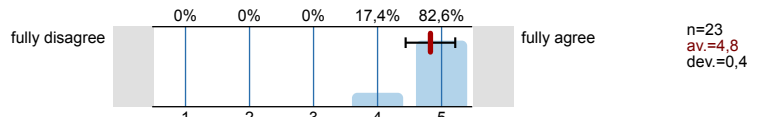
The content of this course is relevant



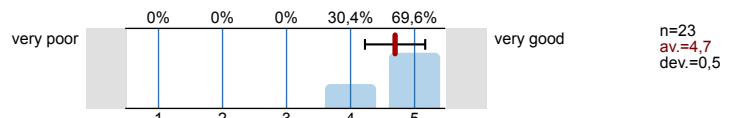
I see sufficient possibilities to translate the content of this course into practice



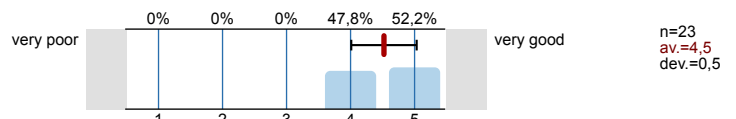
There were sufficient opportunities for participants to contribute, pose questions and engage in group interaction



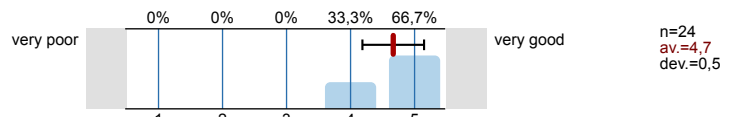
In my view, the quality of the teaching was



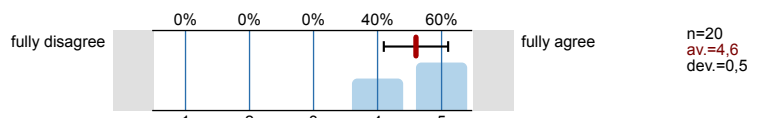
The balance between time investment and acquired knowledge is



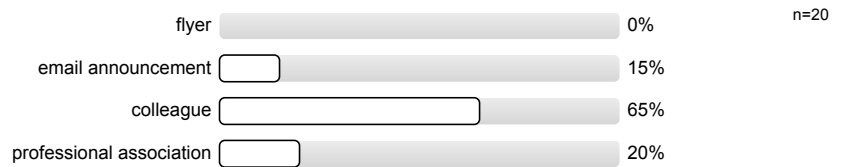
The organization of the course is



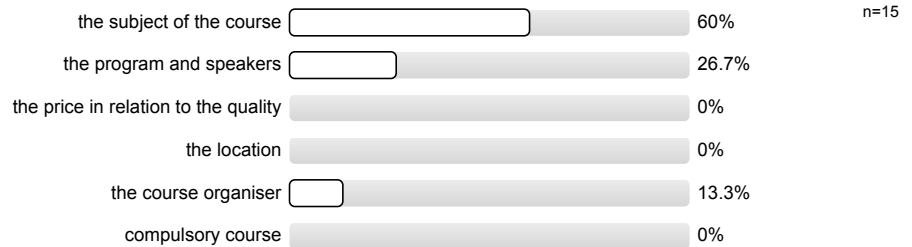
The information about the course was clear and to-the-point



I have heard about this course via

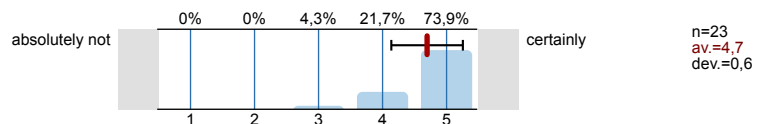


My decision to participate in this course was mostly due to

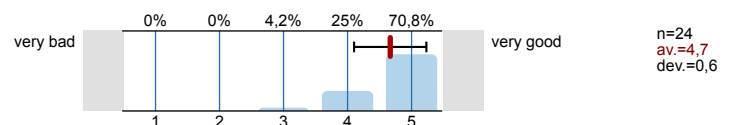


### Course specific questions

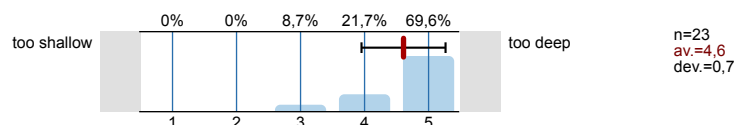
I would recommend this course to anybody in the same position as I am currently



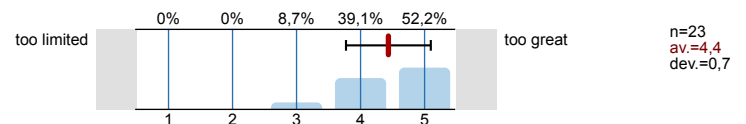
My general impression of the course is



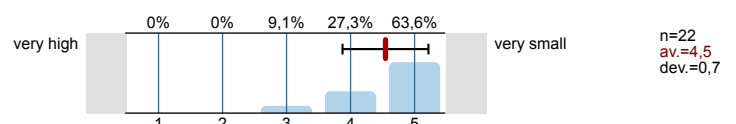
The course gave in-depth coverage of the subject



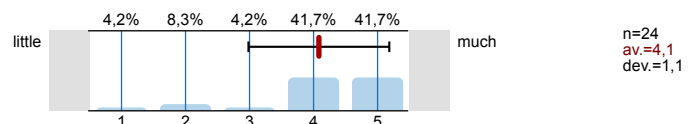
The variety of topics was



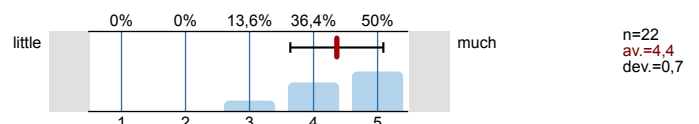
The number of course elements which were not relevant for me, was



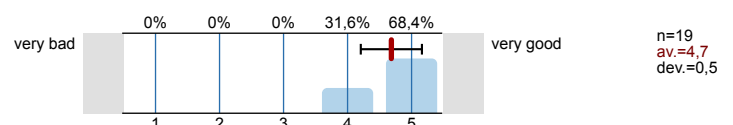
The course provided me with theoretical knowledge which I did not yet have



The course provided me with practical knowledge which I did not yet have



In my view, the quality of the dissection demonstration on Thursday was:



In my view, the quality of the practical dissection on Thursday was:

